

DISASSEMBLY

D-1

1031 GT ENGINE OVERHAUL

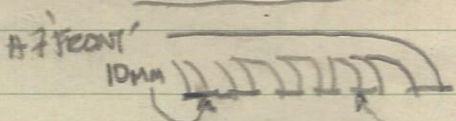
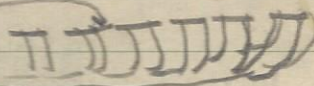
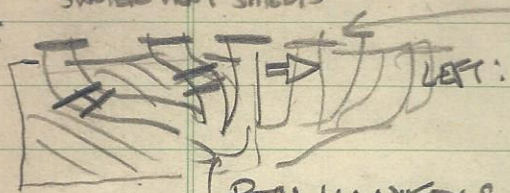
11/78

EXHAUST PIPES,

EXHAUST MANIFOLD, RIGHT: #5 FRONT NUT IS 10MM (STD: 11MM)

SPACER HEAT SHIELD

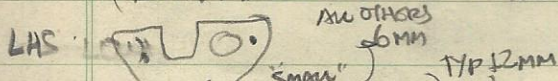
EHS



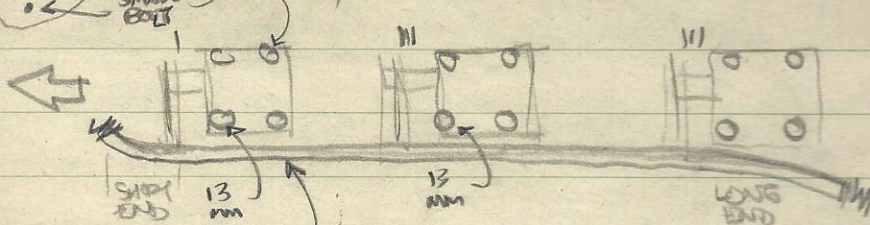
#11 REAR 11MM - ACCESSIBLE ONLY W/O PIPES, BUT - KEPL W/10MM

BOTH MANIFOLDS CAN BE REMOVED W/O REMOVING ENGINE OR CYL HEADS

SHIELDS: LHS



11/6 DISTRIBUTORS



VIEW FROM FRONT

* THIS MANIFOLD CANNOT BE REMOVED W/CAPPS IN PLACE. ∴ MUST BE INSTALLED BEFORE CAPPS ARE BOLTED DOWN

REMOVAL: REMOVE REAR CAPS 1st

MANIFOLDS: NUMBERED

1 (FRONT)

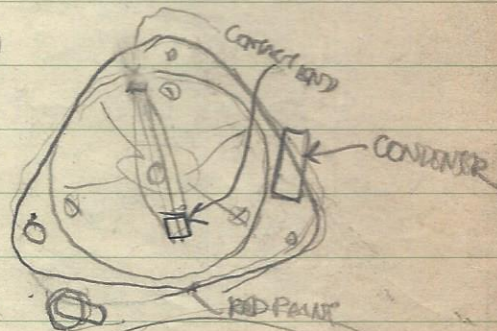
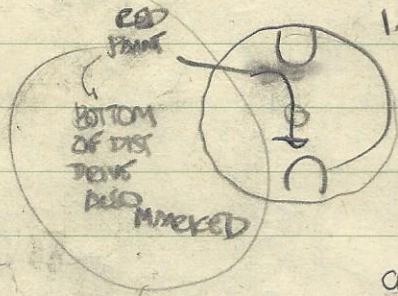
2

3 (REAR)

DISTRIBUTORS: CAPS MARKED

I (1-6)

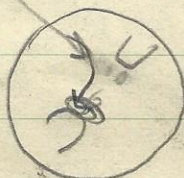
II (7-12)



CHOKE CABLE MT.

FLYWHEEL @ 1/4 6

CONDENSER



7-12

